

KING'S
College
LONDON

University of London

RESEARCHERS IN SCHOOLS

Maintaining research links



15 August 2017

**Dr Nigel Eady, Administrative Director
Centre for Research Staff Development
& Centre for Doctoral Studies**

KING'S
College
LONDON

Research plans

- Continue current research
- New research in current field
- Research into education
- Research projects in school
- Collaboration between school & university



University/school collaboration



www.rcuk.ac.uk/pe/PartnershipsInitiative

THE ROYAL SOCIETY

Home Fellows Events Grants, Schemes & Awards Topics & policy

Partnership Grants

Do you have a great idea for bringing research alive in school?

royalsociety.org/grants-schemes-awards/grants/partnership-grants



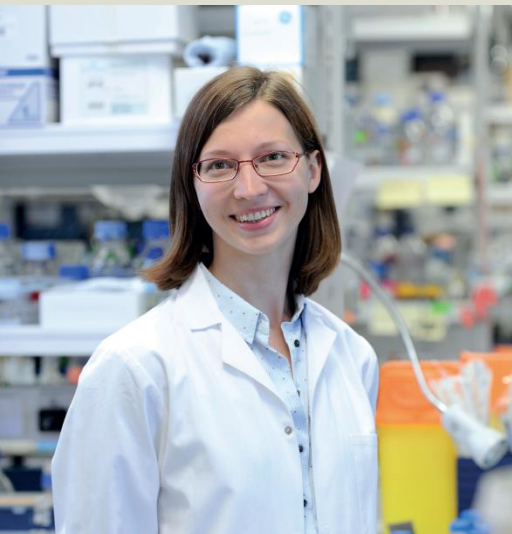
www.embl.de/training/sciencefor-schools/teacher_training



www.researchinschools.org

Continued engagement with research

- Publish work as King's Honorary Research Associate
- Access to King's libraries (incl borrowing rights elsewhere)
- Athens account for on-line access to resources
- Connect with research community in discipline and attend research events
- Enquiries to Dr Nigel Eady nigel.eady@kcl.ac.uk
- Distinct from PGCE through King's School of Education, Communication & Society



Research Portal

Discover King's Research

SEARCH

Welcome to King's Research Portal where you can discover information about our research, from researcher biographies and funding details, to outputs such as published books and peer-reviewed journal articles.

ABOUT



OPEN ACCESS



NEWS



EVENTS



- Repository for research
- Searchable database – who doing what at King's
- Used by media to find experts

<https://kclpure.kcl.ac.uk/portal>

Access professional development

Home | Research & Innovation | Research at King's | Centre for Research Staff Development

CENTRE FOR RESEARCH STAFF DEVELOPMENT

RESEARCH STAFF EVENT 2017

ABOUT US

NEW TO KINGS

COMMUNITY

CAREERS & ONE-TO-ONE SUPPORT

COURSES

COMMUNICATIONS

CONCORDAT

FUNDING OPPORTUNITIES

**KING'S RESEARCH STAFF
EXPERIENCE AWARD**

**KING'S COMMUNITY FUND
RECIPIENTS**

**CAREERS IN RESEARCH ONLINE
SURVEY (CROS) FAQs**

USEFUL RESOURCES

GIVE US YOUR FEEDBACK

CRSD BROCHURE 2016



Research Staff Event 2017
Getting your voice heard
5 September 2017 | Guy's Campus
New Hunt's House, Newcomen St
London SE1 1UL

COMMUNITY

CAREERS

COURSES

COMMUNICATIONS

CONCORDAT

www.kcl.ac.uk/crsd

3 MODES OF DELIVERY

- 1 Face to face, interactive workshops
- 2 One-to-one, personalised, confidential sessions
- 3 Online seminars and professional development courses



> **200**
face-to-face
interactive
workshops



> **800**
hours of
one-to-one
appointments



10
online
courses &
seminars

9 KEY TOPICS



ACADEMIC PROGRESSION – address what is useful to consider and how you might gain experience and knowledge



CAREERS & EMPLOYABILITY – give you the opportunity to think about what you would like from your career and where that might lead you



COMMUNICATION & IMPACT – how to understand others and communicate your message to a variety of audiences, both in your field and the public



IT ESSENTIALS – basic to more advanced knowledge of a variety of packages



PERSONAL EFFECTIVENESS – managing time, problems and projects



RESILIENCE & WELLBEING – managing yourself to improve your ability to work with others and maintain a well-balanced approach



RESEARCH STAFF NETWORK ACTIVITY – engaging with your peers and colleagues to gain knowledge, skills and experience



STATISTICS & DATA MANAGEMENT – ethics, copyright and analysis packages are some of the issues covered in these courses



WRITING & PUBLISHING – these courses cover citations, open access and effective writing



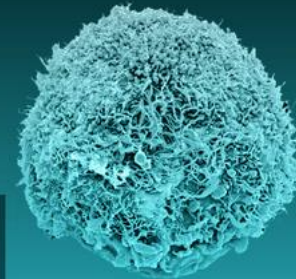
Why King's?

- Our vision is to make the world a better place
- Top 25 university in the world (QS 2016-17)
- World leading research – 84% was world-leading or internationally excellent, 4th in the UK for impact (REF 2014)
- Excellent KCL/UoL and national libraries, special library collections

Home | Research & Innovation

RESEARCH & INNOVATION AT KING'S COLLEGE LONDON

Discover Research at King's
Research to inform and innovate



NEWS HIGHLIGHTS

Omega-3 fatty acids improve symptoms in children and adolescents with ADHD

Researchers at King's College London's Institute of Psychiatry, Psychology & Neuroscience have found that fish oil supplements improve inattention, hyperactivity and the other behavioural and cognitive symptoms in children and adolescents with attention deficit hyperactivity disorder.

MORE RESEARCH NEWS GET IN TOUCH

HOW KING'S
SUPPORTS RESEARCH

COLLABORATE WITH
KING'S

STRATEGY, REF &
GOVERNANCE

CONTACT US

Dr Nigel Eady
Administrative Director
Centre for Research Staff Development &
Centre for Doctoral Studies
020 7848 3913
nigel.eady@kcl.ac.uk
@nae99

www.kcl.ac.uk/crsd
@KclCRSD